

# Project Profile



**Project:** Glebe Street Bridge - Concrete Repairs & CFRP Strengthening

**Client:** CLM Construction Ltd



Glebe St is a short Road located in the Centre of Stoke-on-Trent, it links both the A52 and A500 and is subject to high volumes of traffic during peak times, it is also the home of Stoke City Councils Civic Hall and 14 listed buildings & shops. Glebe Street Bridge carries vehicular traffic over the Trent and Mersey Canal.

A PBI identified sections of the deck as not meeting current standards with respect to the bridge deck loading capacity. As the client, Stoke City Council employed the services of Scott Wilson to propose designs to increase the strength of the bridge deck.

**APA Concrete Repairs Ltd**, were employed to install Carbon Fibre Reinforcing Plates (CFRP's) to the soffit of the bridge deck. The works comprised of concrete repairs, surface preparation, bonding of each plate, before encasing them in dry sprayed concrete to increase the fire damage resistance of the CFRPs. The works as complete improved the load bearing capacity of the deck in line with specification.

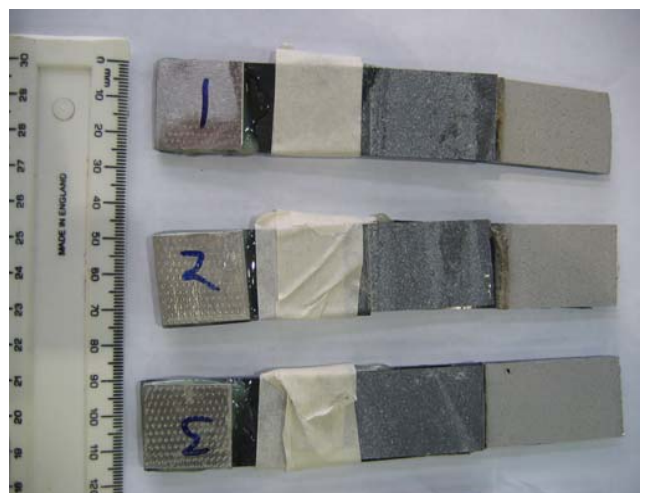


## **NORTHERN OFFICE**

Black Brook Way  
Greetland  
Halifax  
West Yorkshire  
HX4 8ED  
telephone: 01422 379 640  
facsimile: 01422 374 938

## **SOUTHERN OFFICE**

Abbey House  
Wellington Way  
Brooklands Business Park  
Weybridge  
London  
KT13 0TT  
telephone: 0208 853 0627



**e-mail:** [info@apaconcreterepairs.co.uk](mailto:info@apaconcreterepairs.co.uk) **web:** [www.apaconcreterepairs.co.uk](http://www.apaconcreterepairs.co.uk)